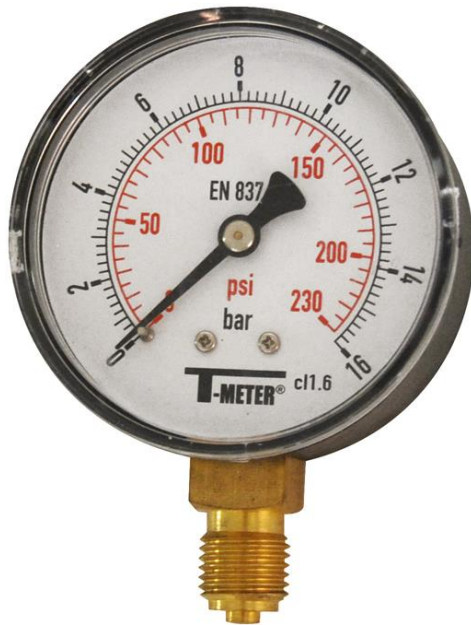


DRY DIAL PRESSURE GAUGE WITH ABS BOX



ISO 9001 : 2015



Size : Diameter 40 to 100
Ends : Male BSP
Min Temperature : + 0°C
Max Temperature : + 60°C
Pressure : From 0 to 40 Bars
Specifications : ABS box
Brass mechanism
Brass fitting
Plexiglas glass

Materials : ABS box

DRY DIAL PRESSURE GAUGE WITH ABS BOX

SPECIFICATIONS :

- ABS box
- Brass mechanism
- Brass fitting
- Plexiglas glass
- Dry dial
- 2.5 class for Ref. 1640
- 1.6 class for Ref. 1643 and 1645
- BSP threaded
- Double graduation bar / psi for diameter 63

USE :

- Not for viscous or crystallizing liquid
- Hydraulic, , heating, compressed air and shipbuilding
- Min and max Temperature Ts : 0°C to +60°C

RANGE :

- ABS box pressure gauge with dry dial Ø 40 with back connection male 1/8" BSP threaded , range from 0/4 to 0/16 bars **Ref. 1640**
- ABS box pressure gauge with dry dial Ø 63 with bottom connection male 1/4" BSP threaded , range from 0/4 to 0/40 bars and range from 0/60 to 0/600 psi **Ref. 1643**
- ABS box pressure gauge with dry dial Ø 100 with bottom connection male 1/2" BSP threaded ,range from 0/4 to 0/40 bars **Ref. 1645**

ACCESSORIES :



- Copper curl PN25 Male / Female BSP
 - DN 1/4" **Ref. 9880202**
 - DN 1/2" **Ref. 9880204**



- Stainless steel curl PN20 Male / Female BSP
 - DN 1/4" **Ref. 9880207**
 - DN 1/2" **Ref. 9880208**



- Steel curl PN25 Male / Male BSP
 - DN 1/4" **Ref. 9880200**
 - DN 1/2" **Ref. 9880201**

DRY DIAL PRESSURE GAUGE WITH ABS BOX

GRADUATIONS :

	Ref.1640 (Ø 40)	Ref.1645 (Ø 100)
Range (bar)	Graduation (bar)	Graduation (bar)
0 / 4	0,1	0,1
0 / 6	0,1	0,1
0 / 10	0,2	0,2
0 / 16	0,5	0,2
0 / 25	-	0,5
0 / 40	-	1

Ref. 1643 (Ø 63)			
Range (bar)	Graduation (bar)	Range (psi)	Graduation (psi)
0 / 4	0,1	0/60	1
0 / 6	0,1	0/90	1
0 / 10	0,2	0/150	2
0 / 16	0,2	0/230	5
0 / 25	0,5	0/350	5
0 / 40	1	0/600	10

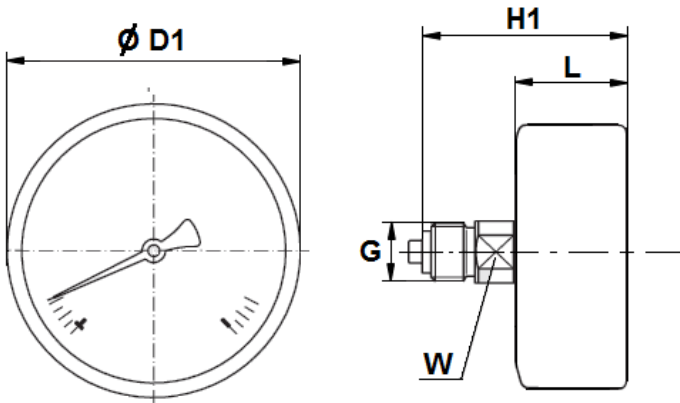
MATERIALS :

DESIGNATION	MATERIALS
Box	ABS
Fitting	Brass
Mechanism	Brass
Dial	Plastic
Glass	Plexiglas
Needle	Duralumin

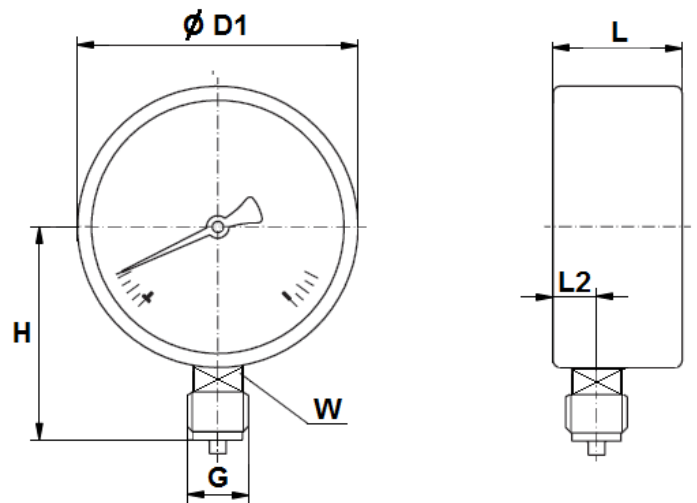
DRY DIAL PRESSURE GAUGE WITH ABS BOX

SIZE (in mm) :

Ref. 1640



Ref. 1643 - 1645



	Ø 40 (Ref.1640)	Ø 63 (Ref. 1643)	Ø 100 (Ref.1645)
L2	-	10	15
L	24.5	28	34
H1	40	-	-
Ø D1	40.5	62.5	98.5
G	1/8	1/4	1/2
H	-	53.5	80.3
W	11	14	22
Weight (kg)	0.050	0.090	0.200

DRY DIAL PRESSURE GAUGE WITH ABS BOX

STANDARDS :

- Fabrication according to ISO 9001 : 2015
- Designing according to EN 837-1
- DIRECTIVE 2014/68/EU : Products excluded from directive (article 4, § 3)
- Threaded male BSP cylindrical ends according to ISO 228-1